

OBSERVATION RECORD

Oph 4

OBJECT

Date: 7/13/01

Time Started: 9:51 PM CDT

Time Finished: 10:29 PM CDT

Transparency: 4.5

Seeing: 4.0

Telescope: 12.5" Dob

Eyepiece: 26mm plössl

Filter: —

Magnification: 60x

Common Name: \_\_\_\_\_

M#: 10

NGC #: 6254

Type: GC

Magnitude: 6.6

Size: 15'

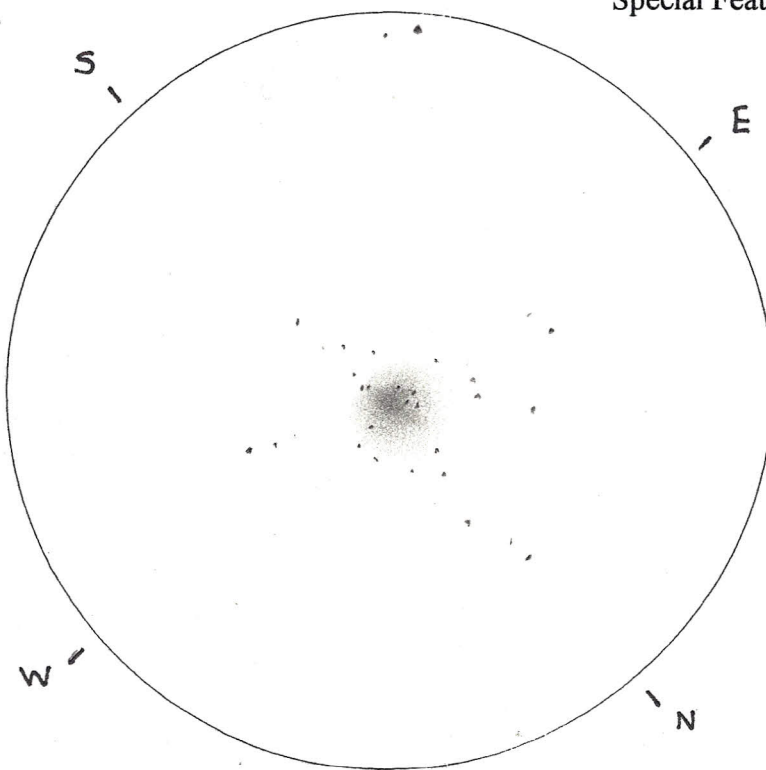
Coordinates: 16h 57.1m -4° 06'

Special Features: Distance: 14,300 lt. yrs.

Stars of 10<sup>m</sup> to 15<sup>m</sup>

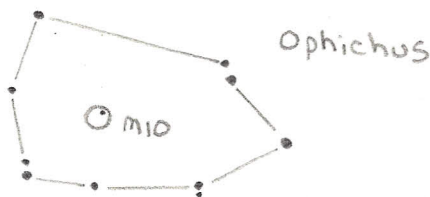
magnitude

Discovered by Messier  
in May 1764.



Locating  
Sketch:

M12 3.4°



Description and Field Notes:

Large, bright globular with many resolvable stars. Becomes gradually brighter toward the center with fairly bright, tightly packed core. At 60x resolvable stars glitter in the core. A hint of a bar shape runs N/S through the center. Higher powers reveal several streamers of stars extending from the center. Looks like a face on spiral galaxy!