

Date: 4/11/99  
Time Started: 8:55 pm CDT  
Time Finished: 9:36 pm CDT  
Transparency: 5  
Seeing: 4

Telescope: 12.5" Dob  
Eyepiece: 40 mm plossl  
Filter: —  
Magnification: 38x

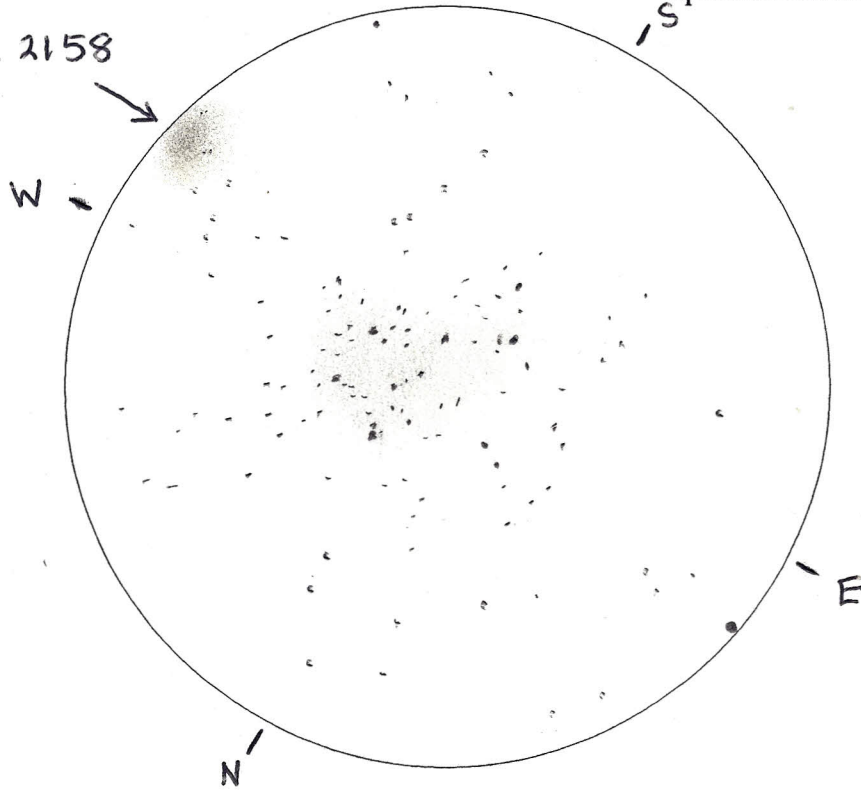
Common Name: \_\_\_\_\_  
M#: 35  
NGC #: 2168

Type: OC  
Magnitude: 5.1  
Size: 28'

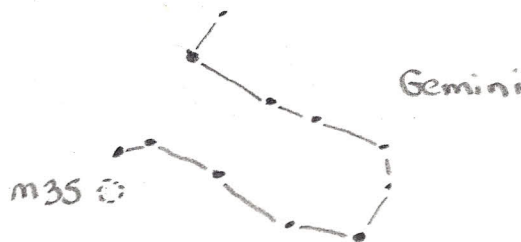
Coordinates: 6h 08.9m 24° 20'

Special Features: Contains about 300 stars  
Distance: about 2200ly  
NGC 2158 located about  
1/2 degree to SW  
(Distance: about 16,000  
lt. yrs.)  
Mags: 8.....

NGC 2158



Locating Sketch:



Description and Field Notes: Nice cluster, somewhat "spread out" with several voids showing no bright stars. NGC 2158 visible as hazy spot just to the west.