

Date: 12/28/99  
Time Started: 9:20 PM CST  
Time Finished: 9:41 PM CST  
Transparency: 4.0  
Seeing: 4.0

Common Name: \_\_\_\_\_  
M#: 81  
NGC #: 3031

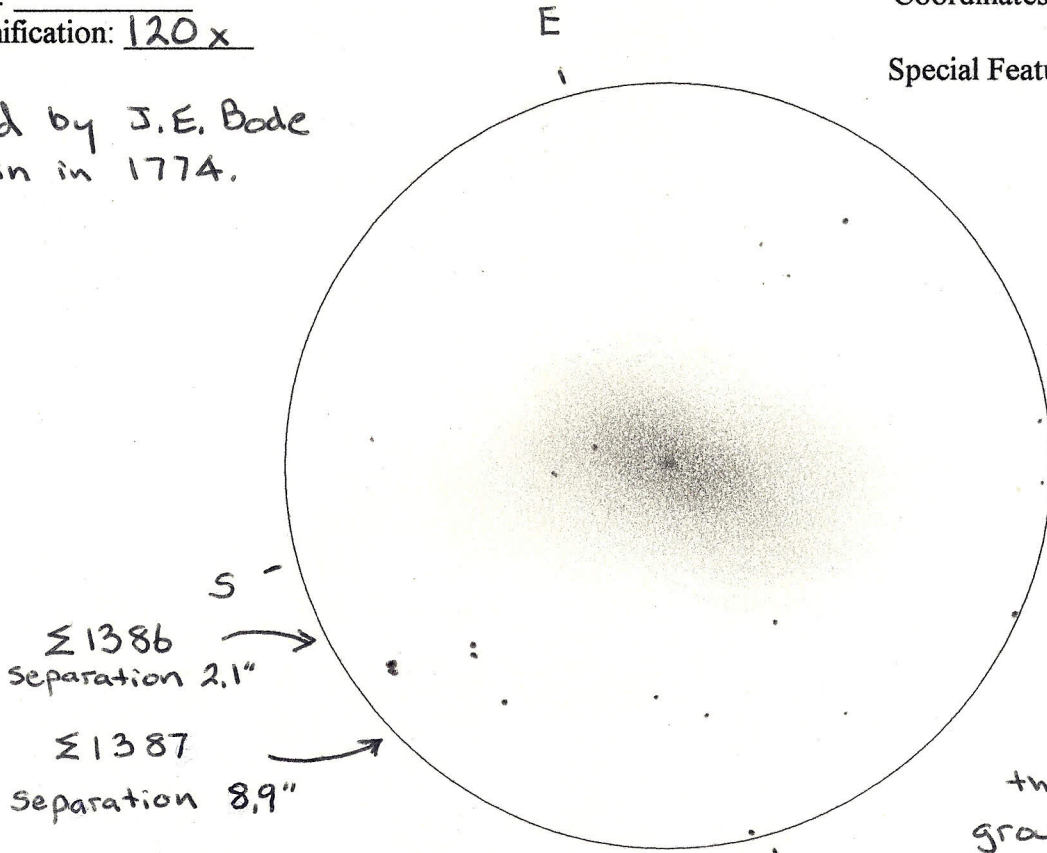
Telescope: 12.5" Dob  
Eyepiece: 12.5 mm  
Filter: \_\_\_\_\_  
Magnification: 120x

Type: Gal  
Magnitude: 6.9  
Size: 26'x14'

Coordinates: 9h55.6m 69°04'

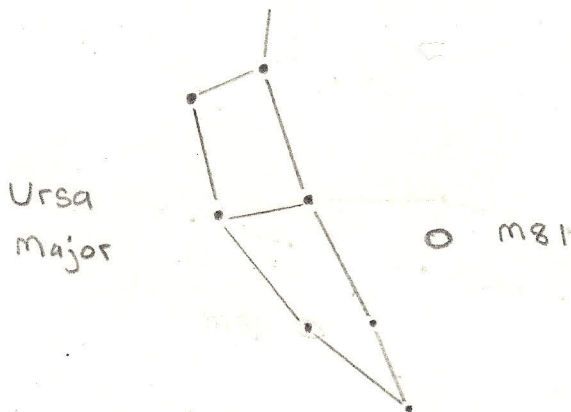
Special Features: Distance: 6½-9 million  
light years  
Diameter ~ 36,000 lt. yrs.

Discovered by J.E. Bode  
at Berlin in 1774.



M81 & M82 Form  
the nucleus of a small  
group of galaxies  
containing about a dozen  
members.

Locating  
Sketch:



Description and Field Notes: An almost face-on galaxy with starlike central condensation, Elliptical shape evident. Makes a very impressive pair with M82 under lower magnification and wider field of view. M81 is fairly bright and large. It is a spiral galaxy.