

OBSERVATION RECORD

OBJECT

Date: 4/10/02
 Time Started: 9:08 PM CDT
 Time Finished: 9:35 PM CDT
 Transparency: 4.0
 Seeing: 1.5

Common Name: _____
 C#: 21
 NGC #: 4449

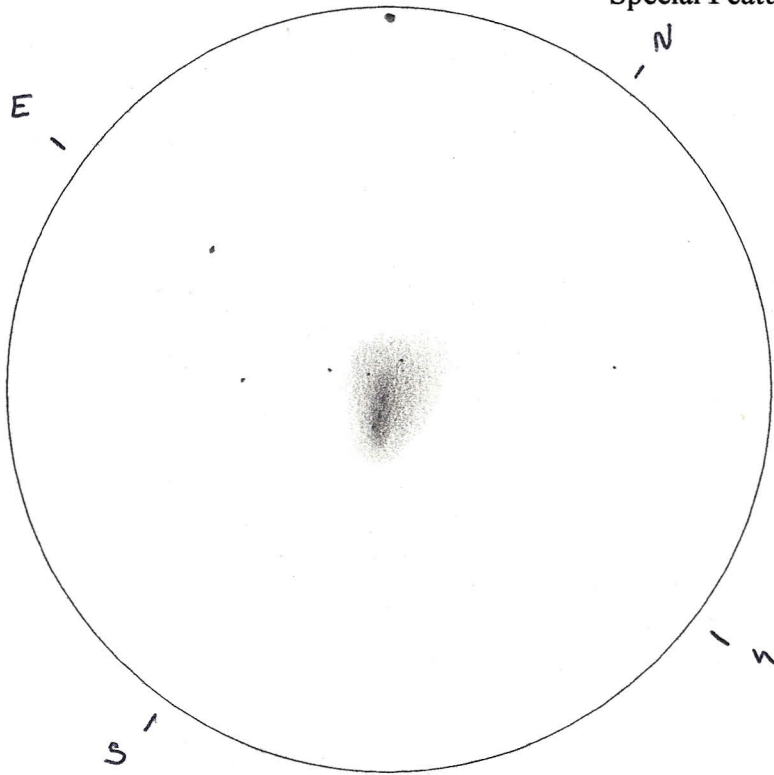
Telescope: 12.5" Dob
 Eyepiece: 12.5mm plossl
 Filter: —
 Magnification: 122x

Type: Gal
 Magnitude: 9.6
 Size: 6.0' x 4.5'
 Coordinates: 12h 28m 11.4s +44°05' 46"

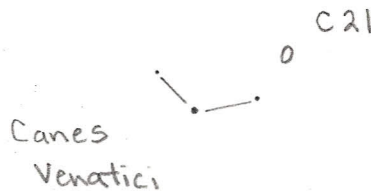
Special Features: Dwarf Irregular Galaxy
Dist: ~13 million lt. yrs.
Similar to the LMC

A member of the
 Canes Venaticorum
 group of galaxies.

Observing the
Caldwell objects
 -David Ratledge



Locating
 Sketch:



Description and Field Notes: An irregular splotch of light, elongated in the NE/SW direction. Brighter and narrower toward the SW. More spread out and diffuse to the NE. Becoming gradually brighter to elongated central region, which seems mottled with at least a couple of brighter knots. An HII region may be visible to the North.

RDV