

### OBSERVATION RECORD

Date: 3/31/03  
Time Started: 8:00 PM CST  
Time Finished: 8:31 PM CST  
Transparency: 3.0  
Seeing: 3.5

Telescope: 12.5" Dob  
Eyepiece: 12.5mm plössl  
Filter: —  
Magnification: 122x

Discovered by  
William Herschel  
in 1788.

First suspected of  
being a globular  
cluster by  
Lord Rosse, 1861.

- Burnham

OBJECT  
Common Name: Intergalactic Wanderer  
C#: 25  
NGC #: 2419

Type: GC  
Magnitude: 10.4  
Size: 4.1'

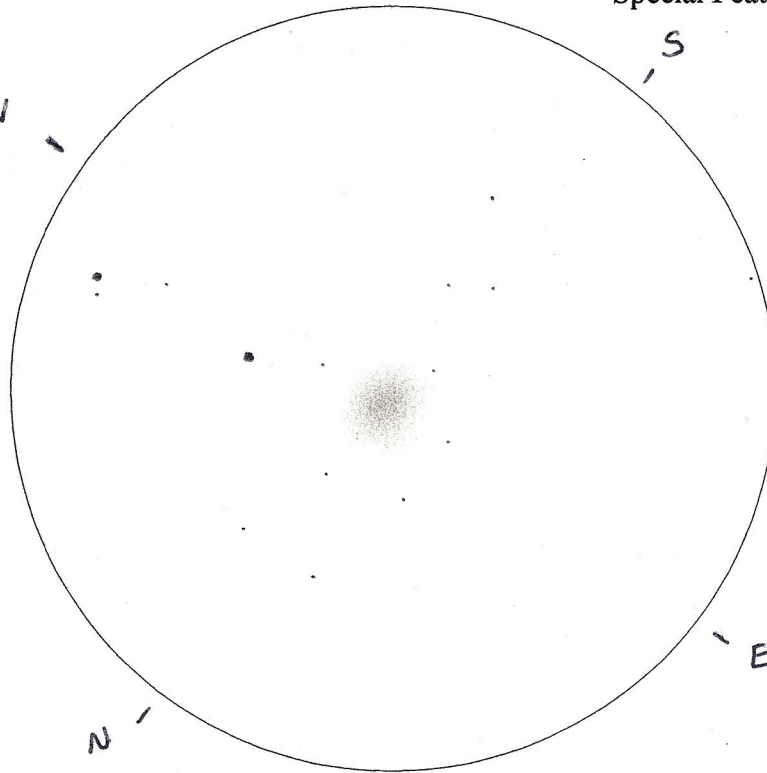
Coordinates: 07h 38m 08.5s +38° 52' 55"

Special Features: Brightest stars Mag. 17

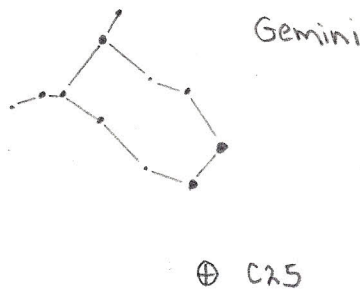
Dist: 0.25 million lt. yrs.

One of the  
most remote  
Milky Way  
Globular cluster  
known.

Observing the  
Caldwell objects  
- David Kartledge



Locating  
Sketch:



Description and Field Notes: A dim, circular globular, unresolved. Becomes very gradually brighter toward the center. No nucleus.