

### OBSERVATION RECORD

OBJECT

Date: 5/1/02  
Time Started: 9:15 PM CDT  
Time Finished: 9:44 PM CDT  
Transparency: 3.5  
Seeing: 4.0

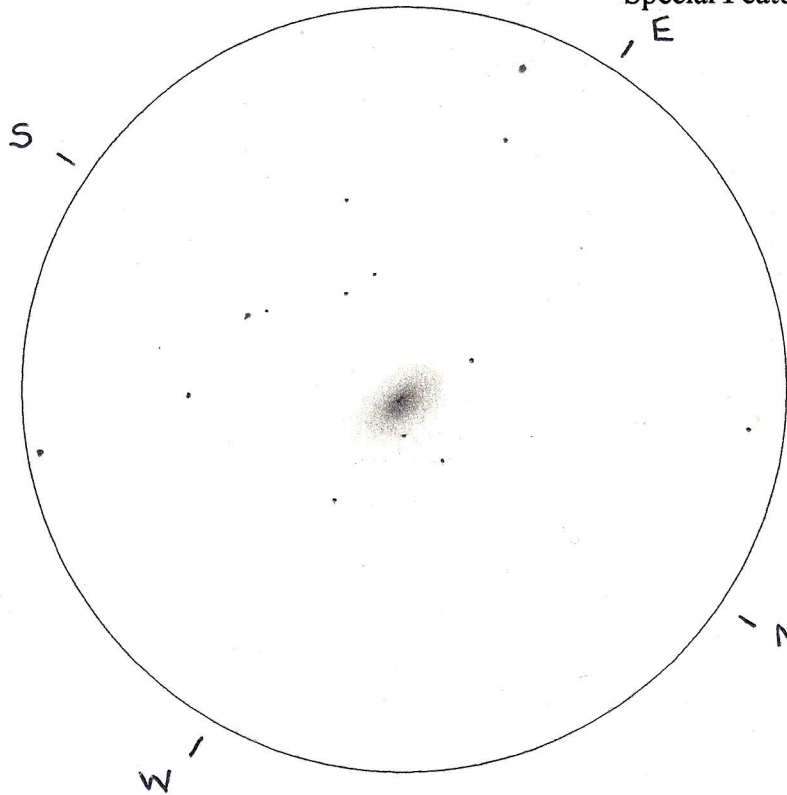
Common Name: \_\_\_\_\_  
C#: 52  
NGC #: 4697

Telescope: 12.5" Dob  
Eyepiece: 12.5mm plössl  
Filter: —  
Magnification: 122x

Type: Gal  
Magnitude: 9.2  
Size: 6.0' x 3.8'

Coordinates: 12h 48m 35.9s -5° 48' 02"

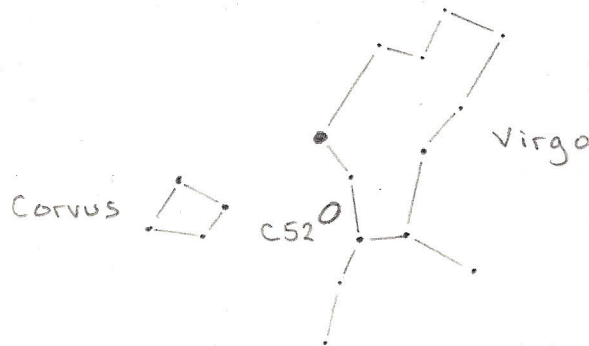
Special Features: E4 galaxy  
Classical Elliptical  
Dist: ~ 60 million H.yrs.



C52 is the dominant elliptical in a galaxy group of about 18 in number, which includes 2 spirals.

Observing the Caldwell Objects  
-David Ratledge

Locating Sketch:



Description and Field Notes: Large and bright. Somewhat elliptical in shape. Becoming gradually brighter toward the center with a starlike nucleus. Elongated somewhat in the ENE/WSW direction. Otherwise unremarkable.