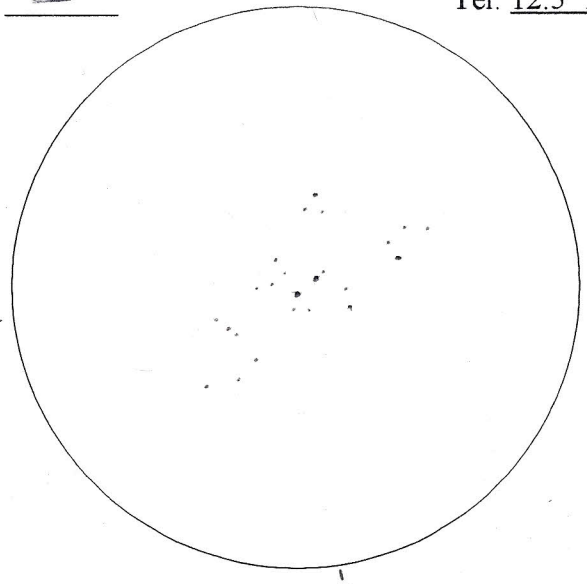


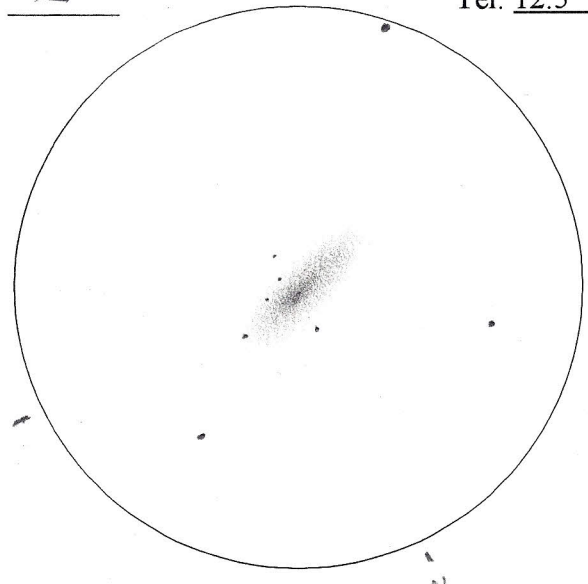
Copyright © 2012 by Robert D. Vickers, Jr.

Object: NGC 2571 (H39)-6
 Type: OC Mag: 7.5 Size: 15' x 16'
 Date: 3/12/04 Time: 2140-2156 CST
 T/S(1-10): 4/4 Eyepiece/X: 12.5mm P/122x
 Fil: — Tel: 12.5" Dob



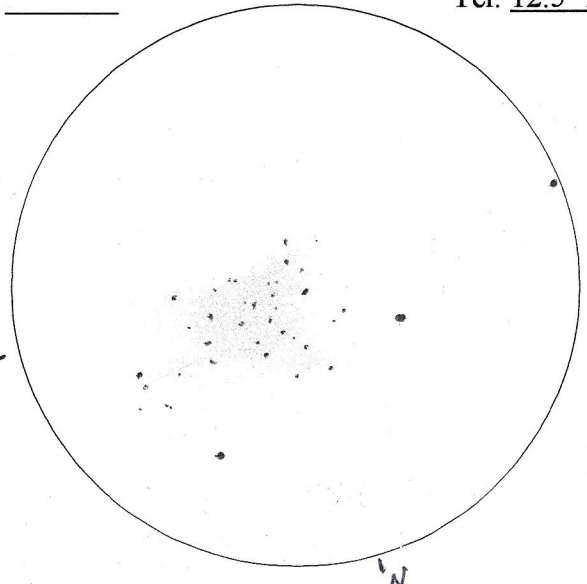
A small but loose gathering of dim stars surrounding a brighter, fairly wide double.

Object: NGC 2613 (H266)-2
 Type: Gal Mag: 11.0 Size: 6.6' x 1.3'
 Date: 3/18/04 Time: 2035-2100 CST
 T/S(1-10): 7/4 Eyepiece/X: 12.5mm P/122x
 Fil: — Tel: 12.5" Dob



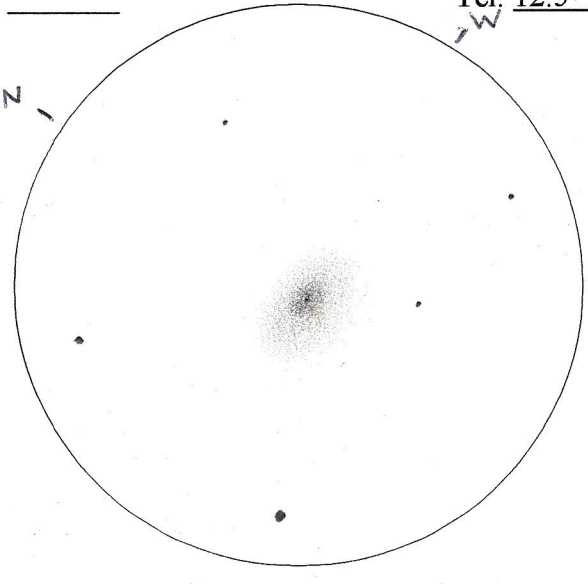
Faint edge-on spiral becoming gradually brighter toward the center with faintly starlike nucleus. Very elongated WNW to ESE.

Object: NGC 2627 (H63)-7
 Type: OC Mag: 8.3 Size: 8'
 Date: 3/21/04 Time: 2042-2108 CST
 T/S(1-10): 8/4 Eyepiece/X: 12.5mm P/122x
 Fil: — Tel: 12.5" Dob



A rather unimpressive collection of rather dim stars graced by 6 or 8 slightly brighter ones. Not very distinguishable from the background. Slight haze.

Object: NGC 2655 (H288)-1
 Type: Gal Mag: 10.7 Size: 5.0' x 3.4'
 Date: 3/21/04 Time: 2123-2141 CST
 T/S(1-10): 8/4 Eyepiece/X: 12.5mm P/122x
 Fil: — Tel: 12.5" Dob



Fairly bright, not quite circular core with starlike nucleus. Surrounded by very dim halo. Elongated somewhat East to West.