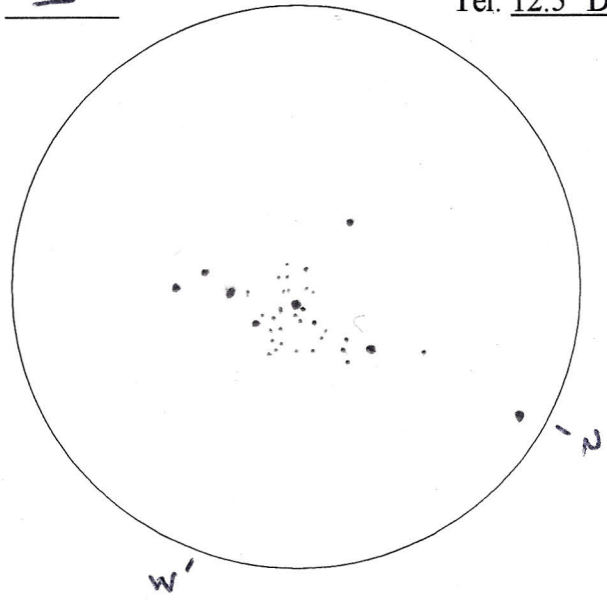


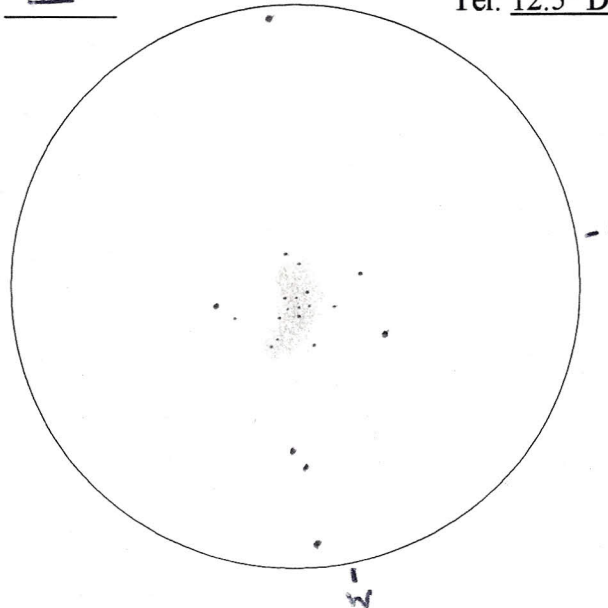
Copyright © 2012 by Robert D. Vickers, Jr.

Object: NGC 2301 (H27)-6
 Type: OC Mag: 5.8 Size: 15'
 Date: 1/25/06 Time: 2106-2124 CST
 T/S(1-10): 9.0/4.5 Eyepiece/X: 26mmP/59x
 Fil: — Tel: 12.5" Dob



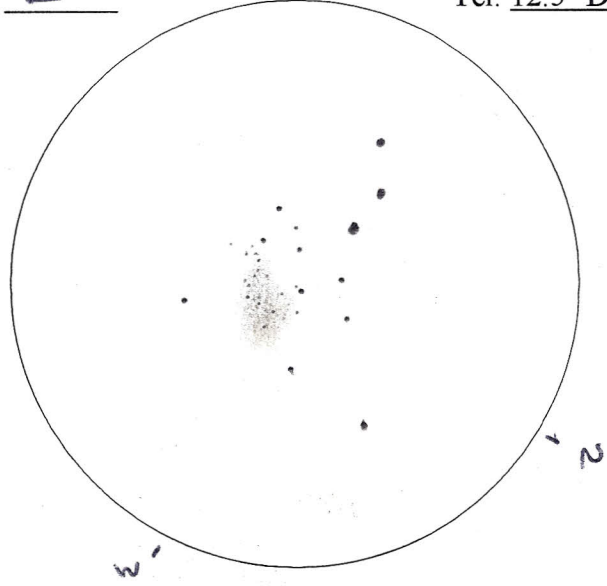
A nice long string of stars running N/S with a knot of dimmer ones nearer the northern end. The two brighter stars near the center of the knot are an uneven gold/blue pair.

Object: NGC 2304 (H2)-6
 Type: OC Mag: 10.1 Size: 5.5'
 Date: 12/23/05 Time: 2208-2224 CST
 T/S(1-10): 8.5/3.0 Eyepiece/X: 12.5mmP/122x
 Fil: — Tel: 12.5" Dob



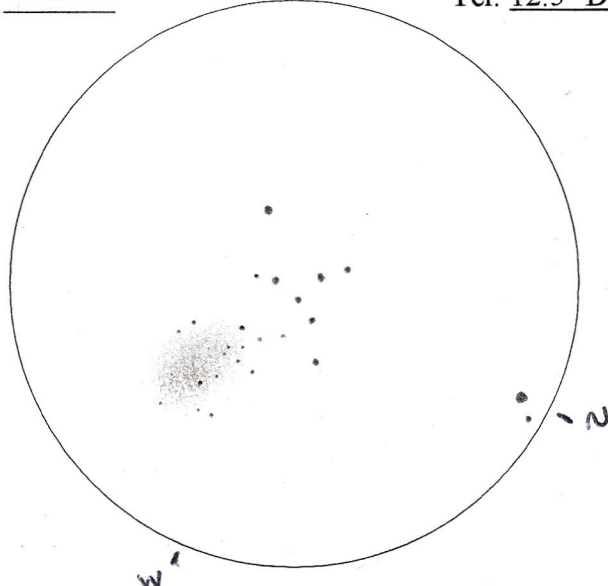
A irregularly shaped cluster consisting of many dim stars and a haze of background stars, unresolved. More stars pop out w/ averted vision. Forms a curve open to the SSE.

Object: NGC 2311 (H60)-8
 Type: OC Mag: 9.6 Size: 7'
 Date: 1/31/06 Time: 2013-2033 CST
 T/S(1-10): 9.0/4.0 Eyepiece/X: 26mmP/59x
 Fil: — Tel: 12.5" Dob



A smallish cluster of dim stars fading into an unresolved haze. The cluster is just WSW of a row of 3 brighter field stars.

Object: NGC 2324 (H38)-7
 Type: OC Mag: 8.8 Size: 9'
 Date: 1/24/06 Time: 1937-1952 CST
 T/S(1-10): 9.0/2.0 Eyepiece/X: 26mmP/59x
 Fil: — Tel: 12.5" Dob



A large but faint cluster w/ a few dim, resolvable stars fading into granular cloud. A bright "Y" shaped asterism just to the ENE composed of 7 stars. Asterism is 22' south of wide, bright double OEE 82.