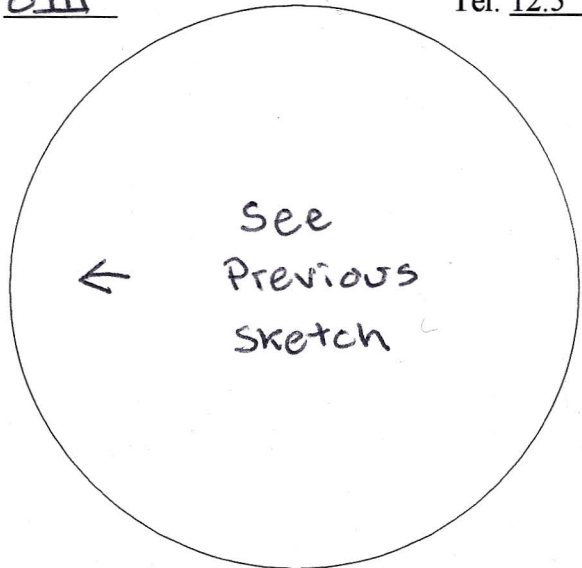


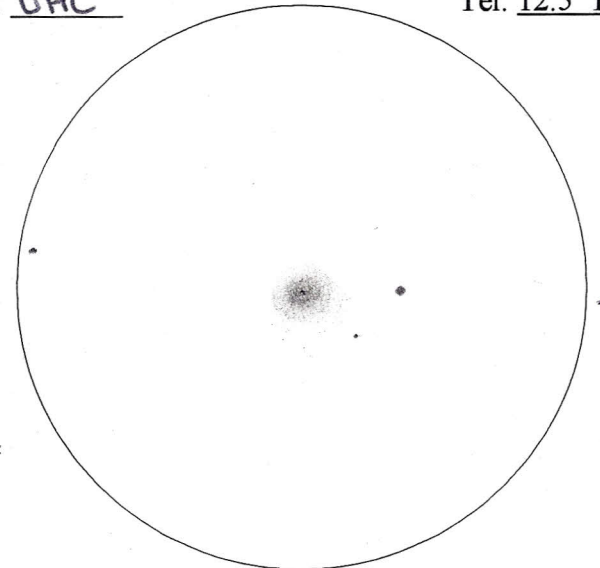
Copyright © 2012 by Robert D. Vickers, Jr.

Object: NGC 2372 (H 317)-2
Type: PN Mag: 11.3 Size: 55"
Date: 4/9/05 Time: 2240-2255 CDT
T/S(1-10): 7.5/4.0 Eyepiece/X: 6.3mm P/122x
Fil: OIII Tel: 12.5" Dob



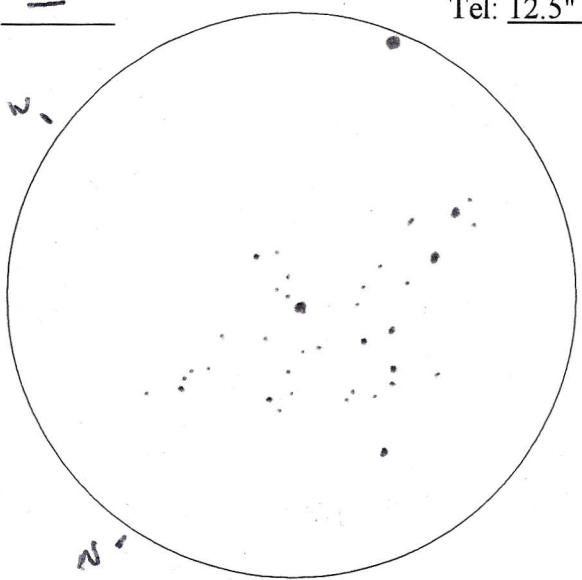
The brighter wsw lobe is NGC 2371 and the slightly dimmer ENE lobe is NGC 2372.

Object: NGC 2392 (H-45-4) ^{Eximo H96} _{or Clown Face}
Type: PN Mag: 9.5 Size: 47" x 43"
Date: 12/22/05 Time: 2128-2149 CST
T/S(1-10): 9/4 Eyepiece/X: 6.3mm P/122x
Fil: UHC Tel: 12.5" Dob



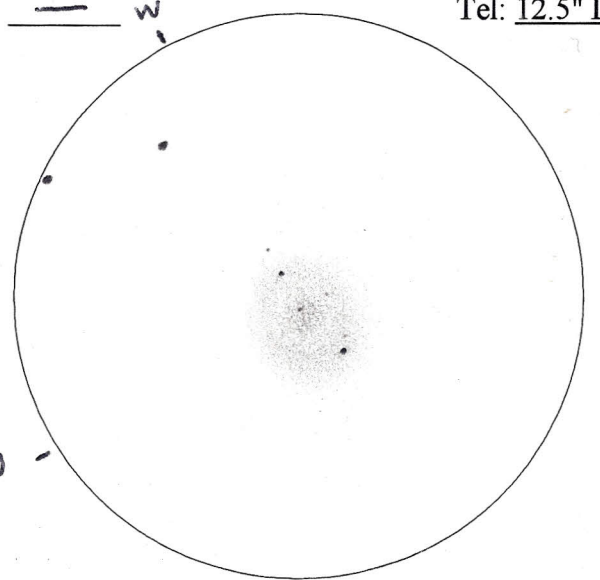
A beautiful and bright PN. Blue-gray in color. Central star easily visible. Circular bright disk becoming brighter toward the center, surrounded by a dimmer halo, mottled inner disk.

Object: NGC 2395 (H11)-8
Type: OC Mag: 9.4 Size: 12'
Date: 4/27/05 Time: 2113-2128 CDT
T/S(1-10): 8.0/3.5 Eyepiece/X: 12.5mm P/122x
Fil: — Tel: 12.5" Dob



A nice scattering of brighter and dimmer stars. Not well defined from the background stars.

Object: NGC 2403 (HAA)-5
Type: Gal Mag: 8.9 Size: 16.8' x 10.0'
Date: 5/6/05 Time: 2207-2231 CDT
T/S(1-10): 8.5/7.0 Eyepiece/X: 12.5mm P/122x
Fil: — ^w Tel: 12.5" Dob



A large, dim galaxy with some E/W elongation. Starlike nucleus (dim) with wide, dim halo. Not much central condensation. A hint of spiral arms.